

Pretend you are bringing up a heavy treasure chest from the bottom of the sea to the top.

**Tips from Dallas and Katie:**

1. Begin on the **LOWEST C** on the piano.
2. Use a 3-1 donut and play **skips** going **UP** the piano. Drop into each key. Then push off gently with your wrist (toward the fallboard) as you lift.
3. End on the **first C ABOVE MIDDLE C**.

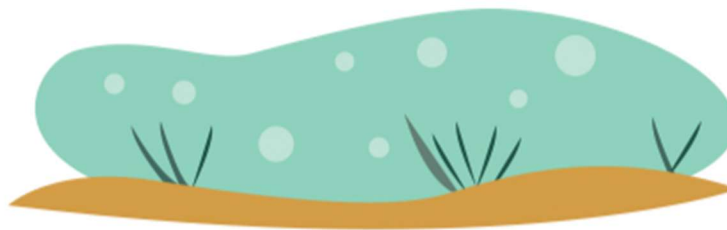
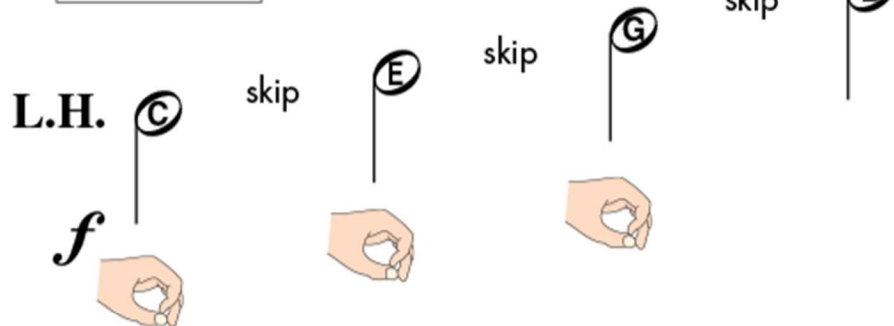


17

# Treasure Chest

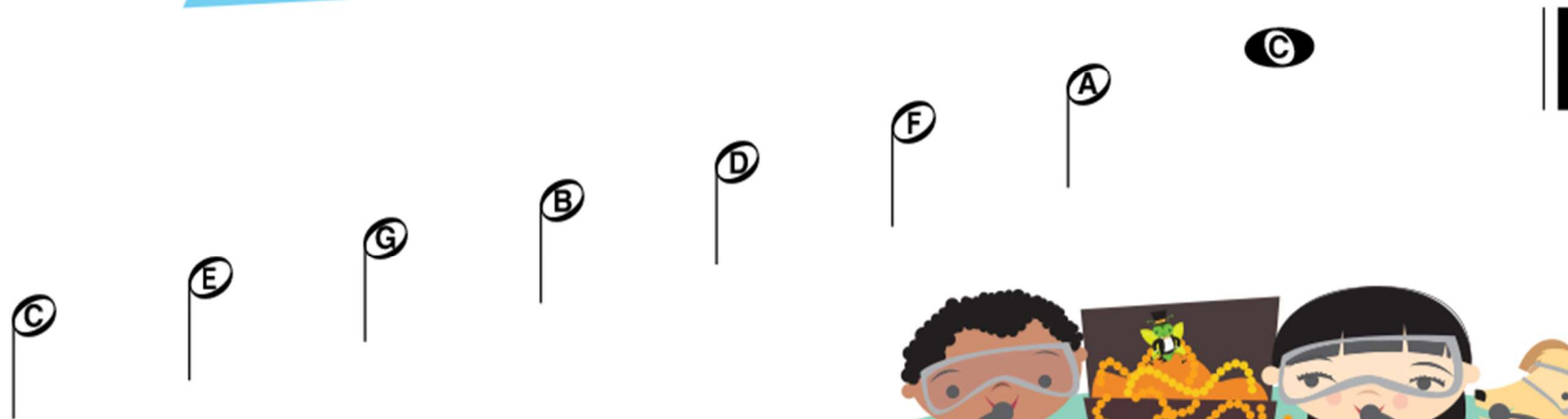
L.H. Skips Across the Keys

Start on the  
**LOWEST C**  
of the piano.





End on the first C ABOVE MIDDLE C!



Can you play very s-l-o-w-l-y naming the keys as you skip?

Can you name each friend?



Teacher Duet: (Student begins on the lowest C and skips up to 3rd space C in the treble clef.)

8<sup>va</sup>

5 (8<sup>va</sup>)